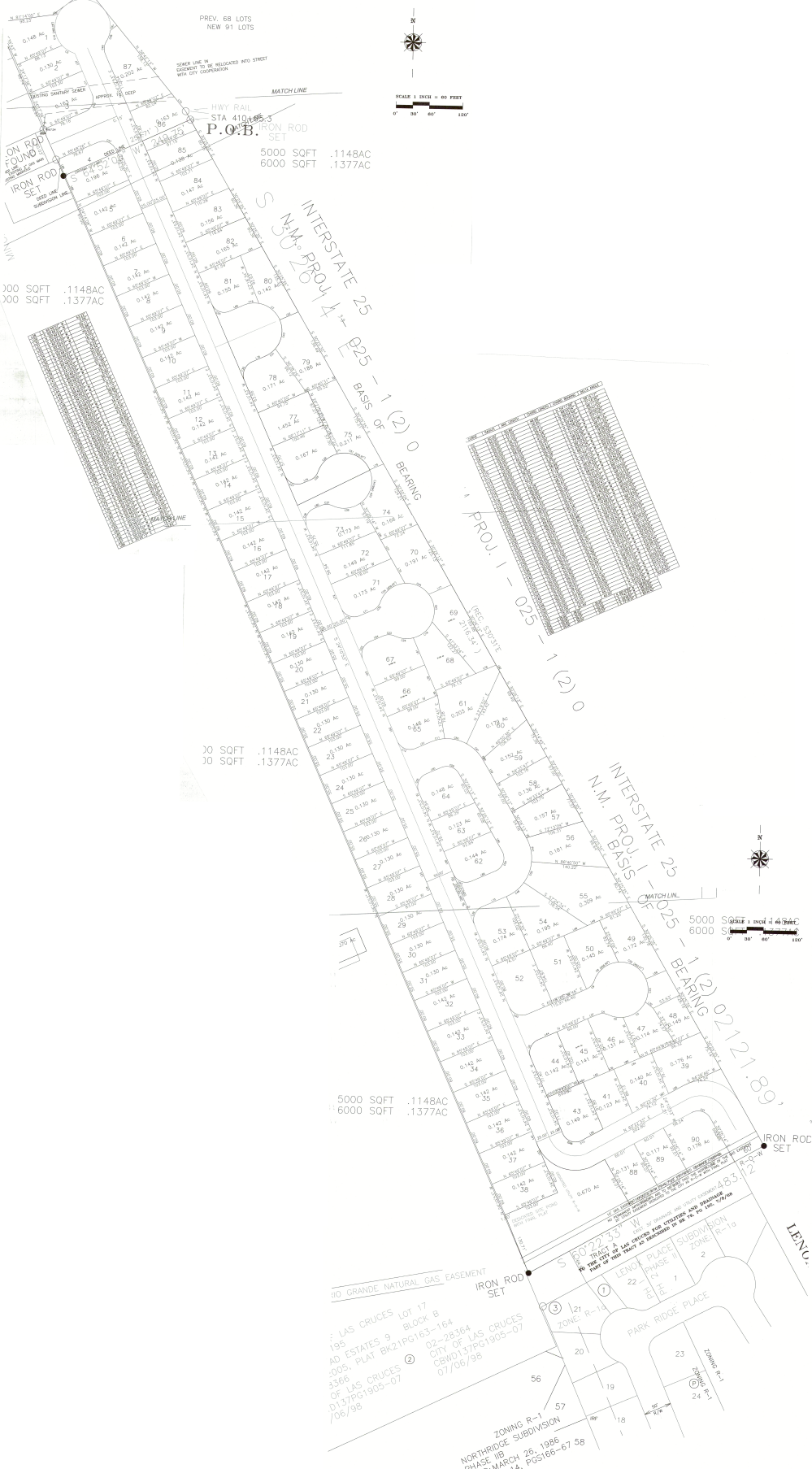


PRELIMINARY PLAT
 LENOX NORTH SUBDIVISION
 A 20.613 ACRE TRACT IN SECTION 31
 T. 22 S., R. 2 E., N.M.P.M. OF THE U.S.G.L.O. SURVEYS AND BEING PART
 OF THE HIGHLAND PARK ADDITION AS FILED: NOV. 4, 1909, PLATBK 1, PAGE 9
 CITY OF LAS CRUCES, DONA ANA COUNTY, NEW MEXICO

PREV. 68 LOTS
 NEW 91 LOTS

SEVERAL LOTS IN
 EXISTENCE TO BE RELEGATED INTO STREET
 WITH CITY COOPERATION



P.O.B.
 5000 SQFT .1148AC
 6000 SQFT .1377AC

5000 SQFT .1148AC
 6000 SQFT .1377AC

5000 SQFT .1148AC
 6000 SQFT .1377AC

5000 SQFT .1148AC
 6000 SQFT .1377AC

5000 SQFT .1148AC
 6000 SQFT .1377AC

NO GRANDE NATURAL GAS EASEMENT
 LAS CRUCES LOT 17
 BLOCK B
 AD ESTATES 9
 .005, PLAT BK21PG163-164
 .3366
 OF LAS CRUCES ②
 D137PG1905-07
 /06/98
 02-28364
 CITY OF LAS CRUCES
 CRW0157PG1905-07
 07/06/98

ZONING R-1
 NORTHDRIDGE SUBDIVISION
 PHASE III
 FILED: MARCH 26, 1986
 BK 14, PGS165-67 58

TRACT OF LAS CRUCES FOR INTEREST AND BEING PART
 OF THE PLAT OF THE CITY OF LAS CRUCES
 LENOX PHASE I
 SUBDIVISION
 ZONE R-1
 PARK RIDGE PLACE



5000 SQFT .1148AC
 6000 SQFT .1377AC